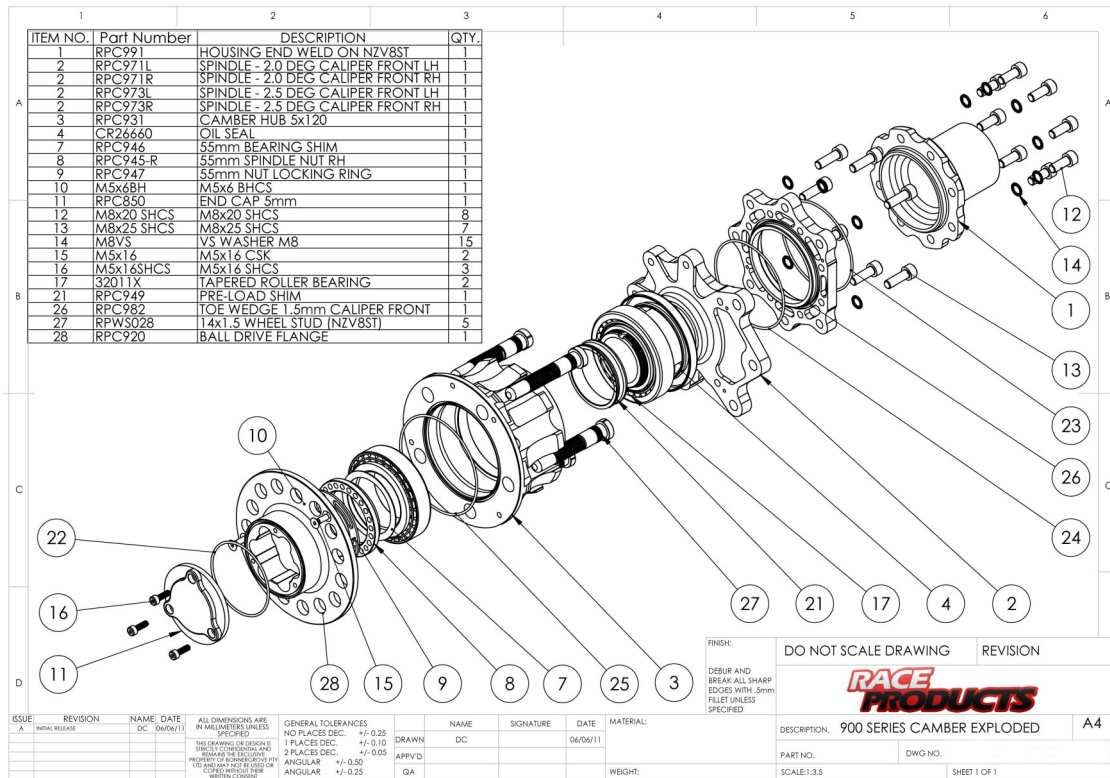


RACE PRODUCTS

900 Series Camber/Toe Kits



The Race Products 900 Series Camber and Toe Kits have been designed for large diffs such as the Ford 9". With all of the safety benefits of a fully floating hub, and the performance advantage of Negative Camber and Toe Adjustments.

Featuring our own unique CV Ball Drive System, this kit has been well proven in top level competition, as it is standard equipment in the NZ V8 SuperTourer series, as well as being used in some of Australia's top Targa cars, and Sports Sedans.

We can also supply a Spline Drive Version suitable for Touring Car Masters and other Categories, as currently used in John Bowe's Mustang.





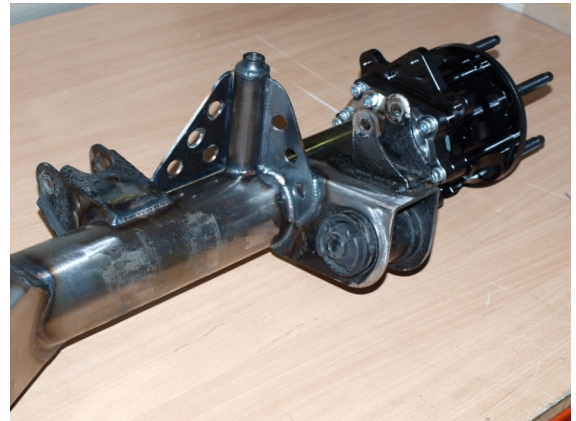
Our 900 Series Camber Kit, uses Aircraft Grade 7075 Aluminium hubs as standard. (Steel Hubs also available) .



To drive the kit and allow Camber and Toe changes to be made, we use our own ultra strong CV Drive EN26 Billet Axles. (on left) Barrel Spline Drive also available (on right)



Camber and Toe Changes are carried out by changing the Toe Wedges, or Camber Spindles as required.



We can also offer a full fitting and fabrication service (quotes available on request.)

All Kits are fully comprehensive and Include the following:

- EN26 Billet Axles (300m option available)
- All Hardware, Nuts Bolts Etc
- Quality Timken Bearings
- Steel Cased Seals
- Our unique locking system with preload spacers
- 1– 3.0 Degrees Camber Spindles available
- 0.5—2.0mm Toe Wedges available
- Special tools for axle fitment/removal, and spindle nut.



**RACE
PRODUCTS**

P +61 (7) 3861 4205
E sales@raceproducts.net
4/40 Boothby St, Kedron, QLD
Australia 4031